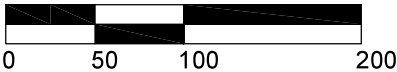


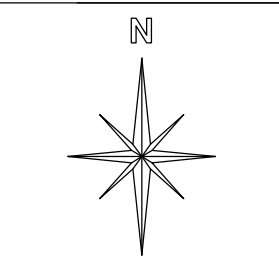
Legend:

 Application Area

SCALE BAR



REVISIONS		
Date	Description	By



TERRESTRIA LIMITED

TERRESTRIA LIMITED
T/A Night Consulting
& Engine Moves
Hampton - Aiden,
Salisbury
B92 0AZ
Mob - 0771277525
e-mail - nick@terrestria.co.uk

Client

DUDMAN ROCK COMMON LIMITED

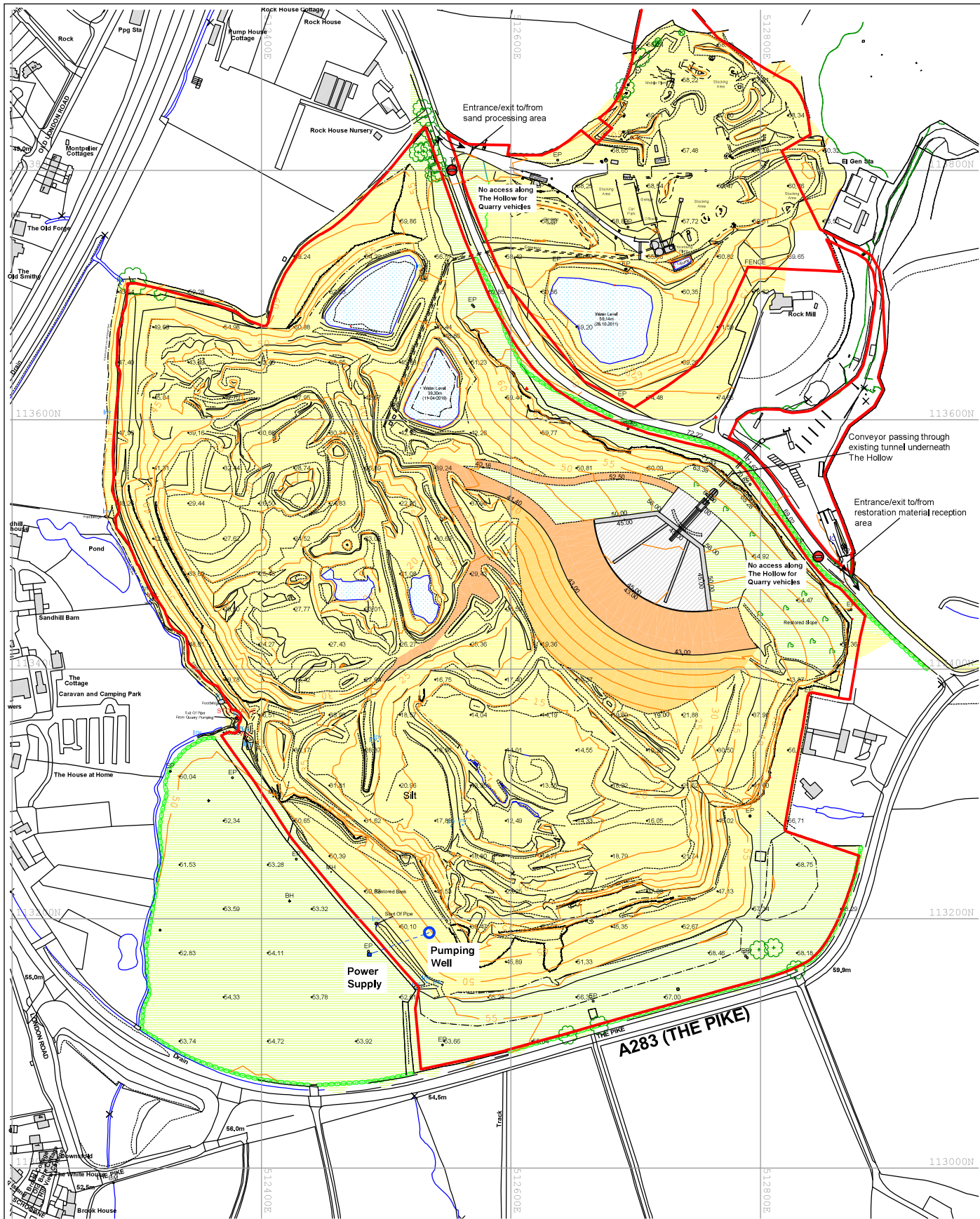
Job Title: Rock Common Quarry

Project Title: Planning application to vary approved restoration

Scale: 1:2000	From: SEP 20	Drawn: (M)	SW	Checked: MM
---------------	--------------	------------	----	-------------

DWG Title: Topographic Plan (April 2019)

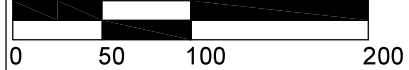
DWG No: DRCL/RCRAWP-01



Legend:

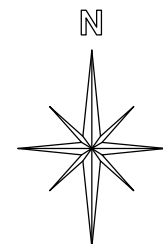
Application Area

SCALE BAR



REVISIONS

Date	Description	By



TERRESTRIA LIMITED

TERRESTRIA LIMITED
T/A Night Consulting
& Engine Movers,
Hampton-on-Avon,
Salisbury
BA2 0AZ
Mob- 0711277625
e-mail - mick@terrestria.co.uk

Client
DUDMAN ROCK COMMON LIMITED

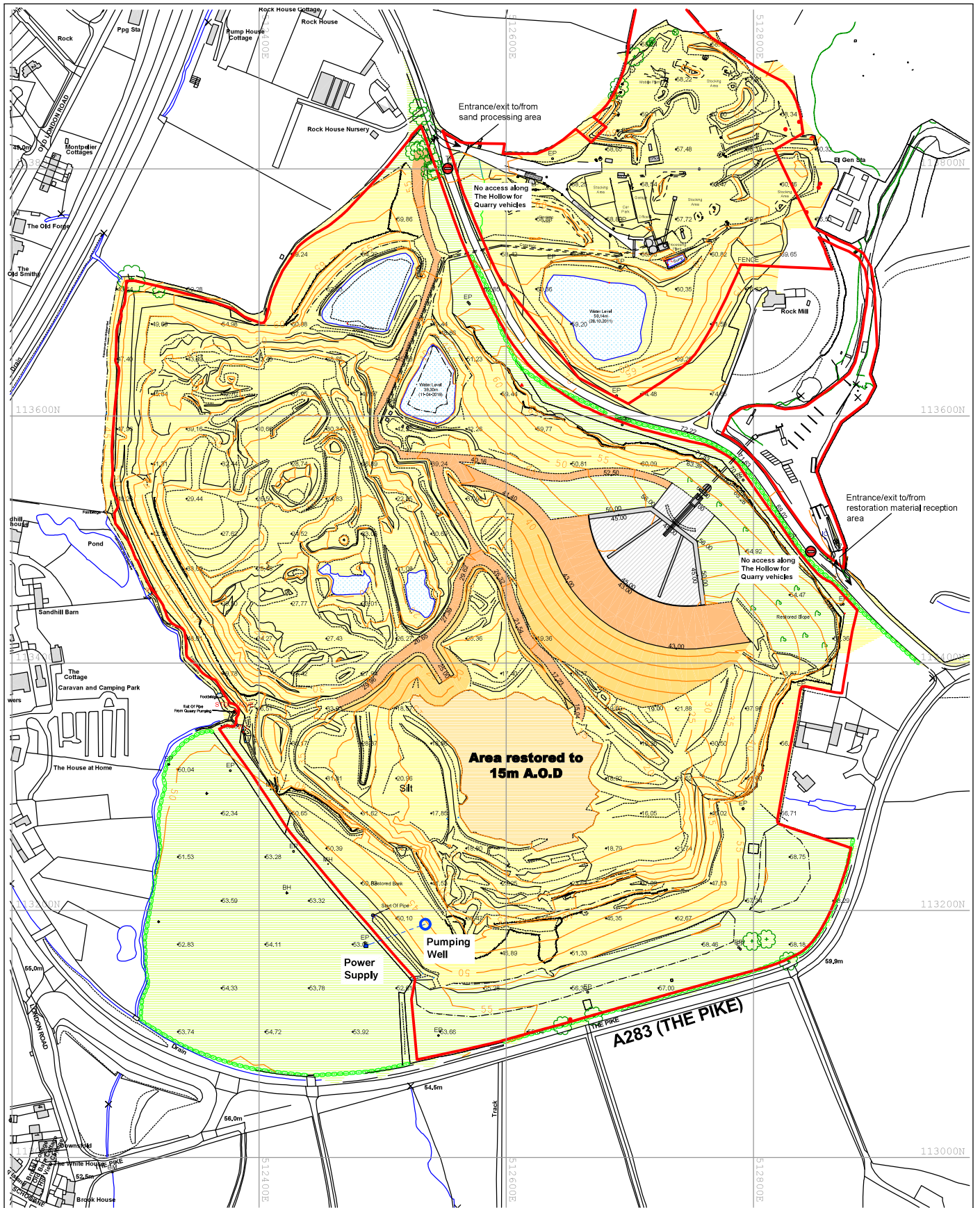
Job Title: **Rock Common Quarry**

Project Title:
Planning application to vary approved restoration

Drawn	Checked	Drawn	Checked
1:2000	SEP 20 (14)	SW	MM

Drawn Title:
Restoration material handling area

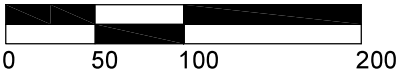
DWT No:
DRCL/RCRAWP-03



Legend:

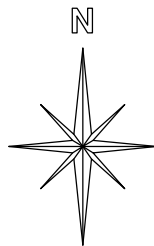
Application Area

SCALE BAR



REVISIONS

Date	Description	By



TERRESTRIA LIMITED

TERRESTRIA LIMITED
T/A M&M Consulting
& Engine Meas.
Hampton/Alden,
Salisbury
BA2 0AZ
Mob: 07712779225
e-mail: mick@terrestria.co.uk

Client
DUDMAN ROCK COMMON LIMITED

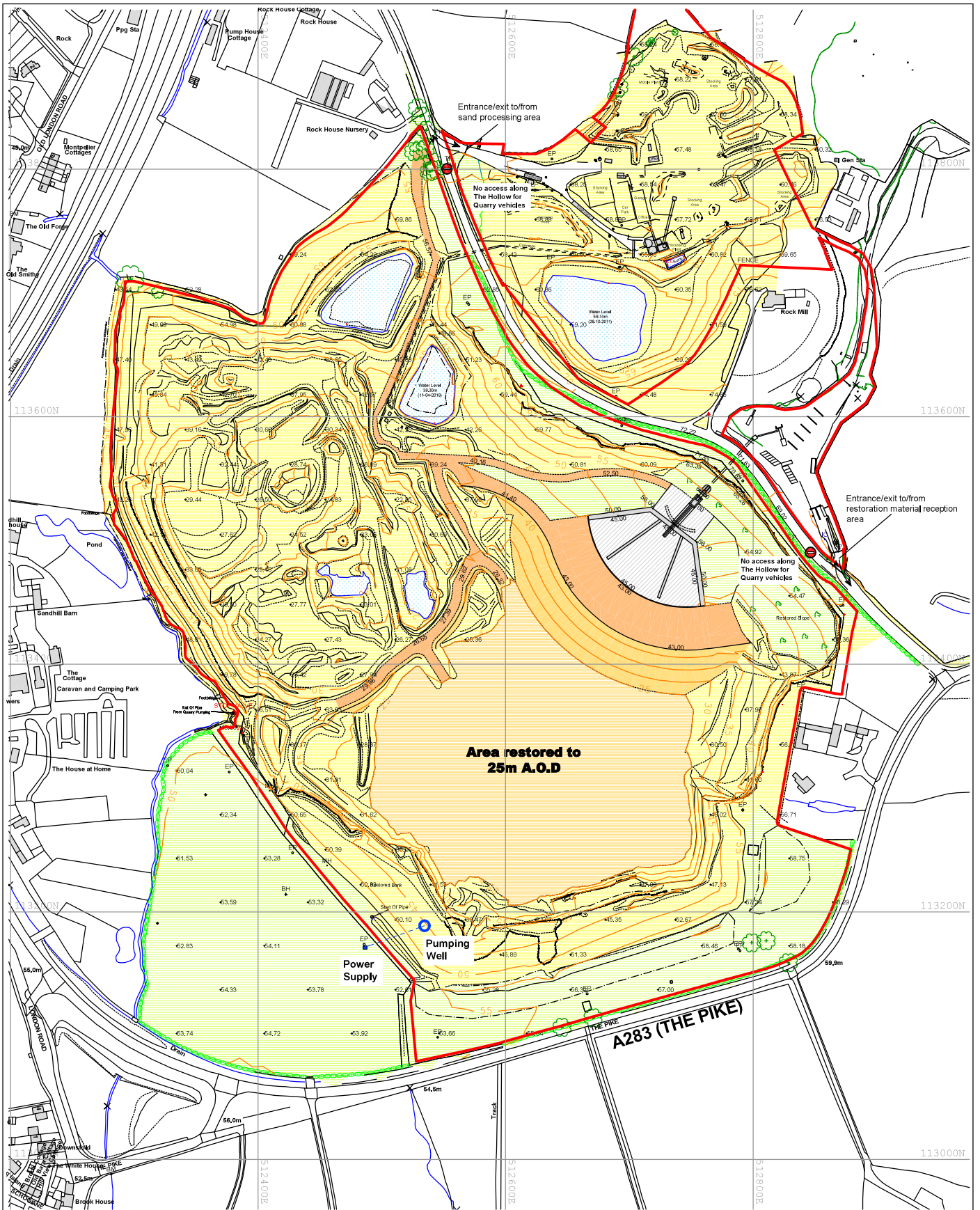
Job Title: Rock Common Quarry

Project Title:
Planning application to vary approved restoration

Date	From	To	Drawn	Checked
1:2000	SEP 20 (V4)	SW		MM

Drawn title:
**Phase 1
Restoring to 15 metres AOD**

DWT/No:
DRCL/RCRAWP-04



Legend:

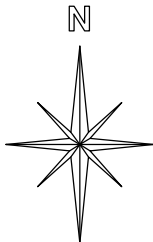
Application Area

SCALE BAR



REVISIONS

Date	Description	By



TERRESTRIA LIMITED

TERRESTRIA LIMITED
T/A M&M Consulting
& Engine Mevs
Hampton-Auden,
Suffolk
B92 0AZ
Mob- 0771277625
e-mail- mick@terrestria.co.uk

Client
DUDMAN ROCK COMMON LIMITED

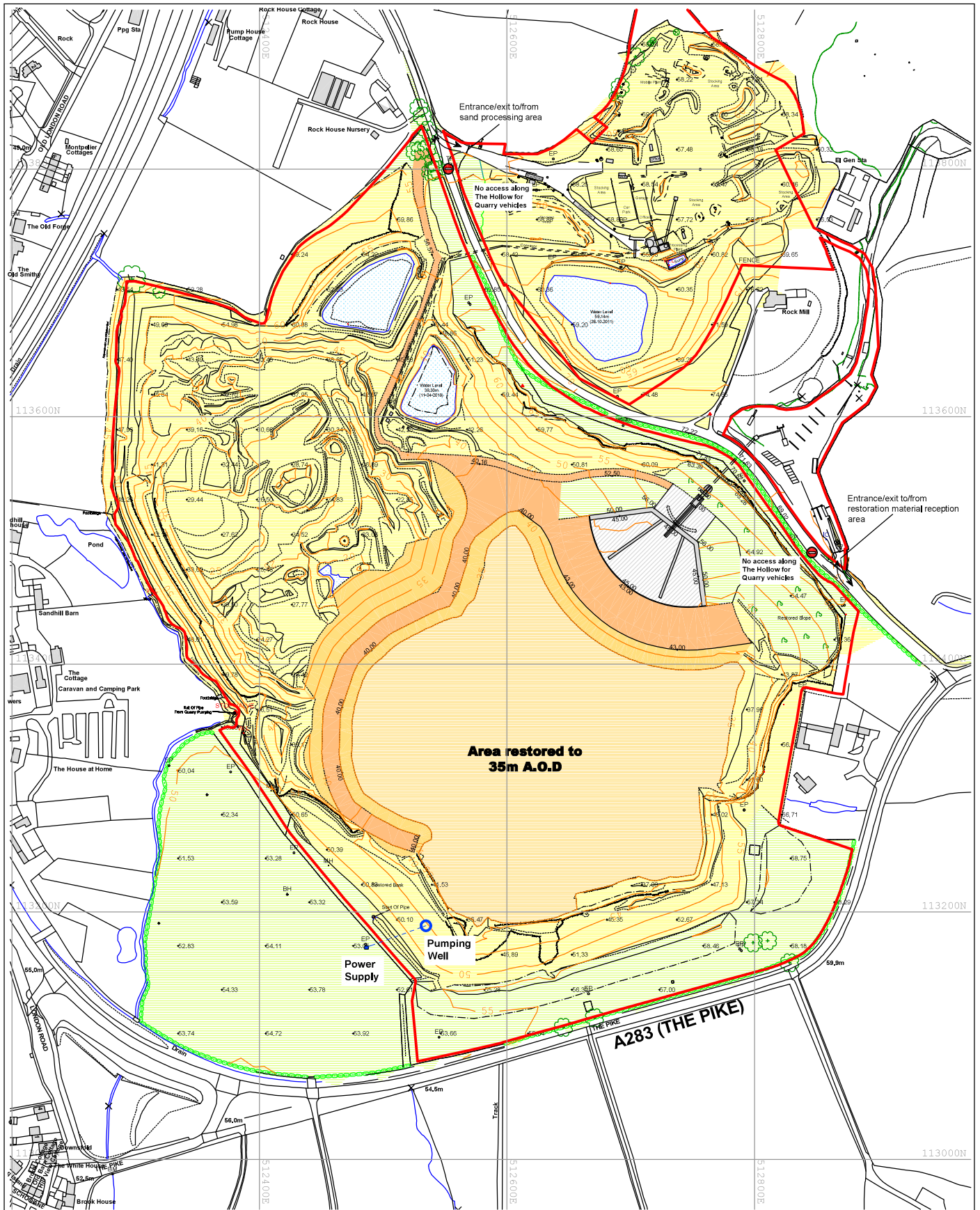
Job Title
Rock Common Quarry

Project Title
Planning application to vary approved restoration

Date	From	To	Drawn	Checked
1:2000	SEP 20	(14)	SW	MM

Doc. title
Phase 2 Restoring to 25 metres AOD

DWT/No.
DRCL/RCRAWP-05



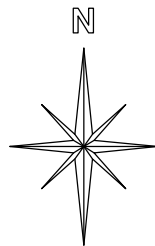
Legend:

Application Area

SCALE BAR



REVISIONS		
Date	Description	By
#	#	#
#	#	#
#	#	#
#	#	#
#	#	#
#	#	#



TERRESTRIA LIMITED

TERRESTRIA LIMITED
 T/A M&H Consulting
 6 Engine Meads,
 Hampton Road,
 Salford
 B92 0AZ
 Mob: 0711277625
 e-mail: mick@terrestria.co.uk

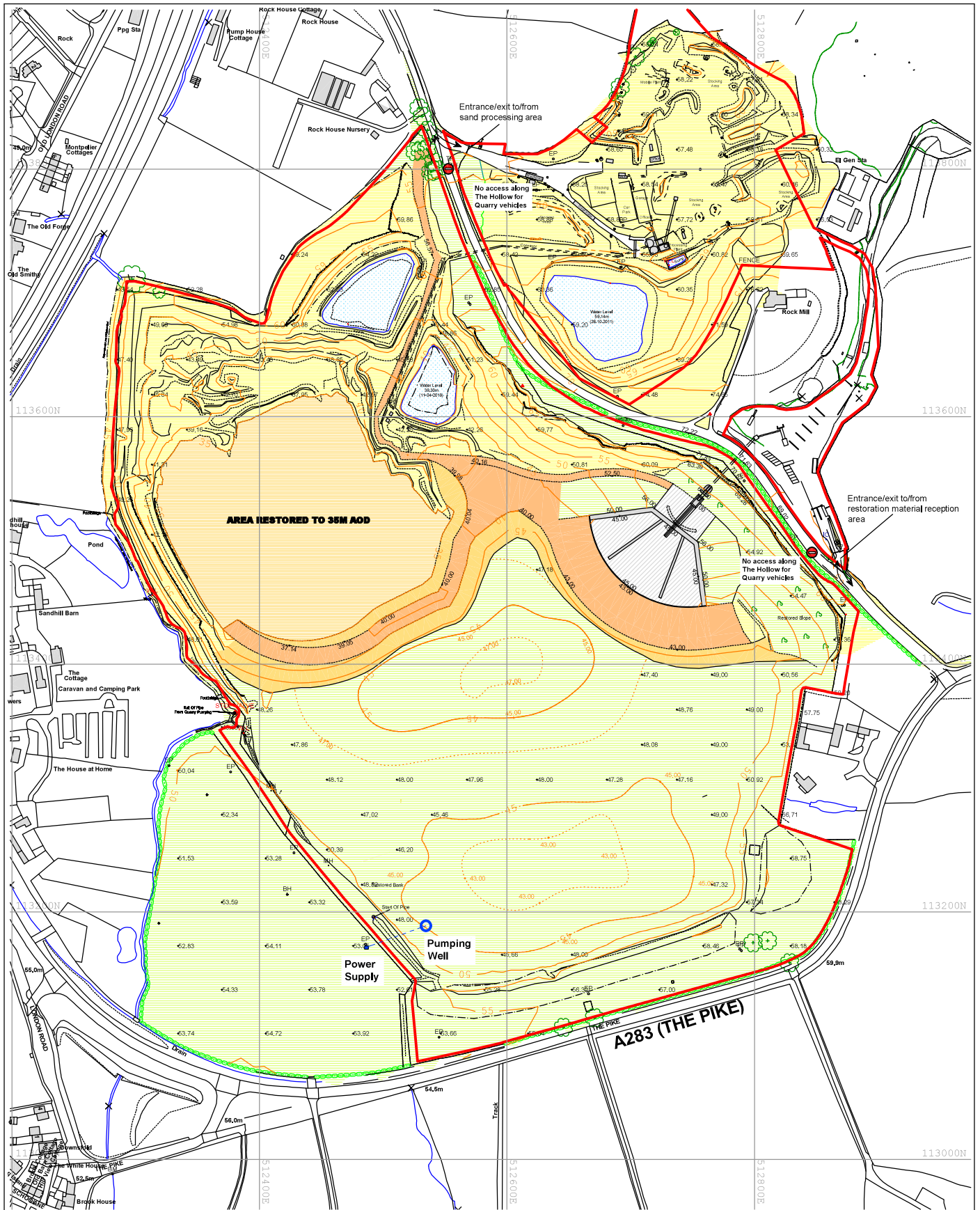
Client
DUDMAN ROCK COMMON LIMITED

Job Title: **Rock Common Quarry**

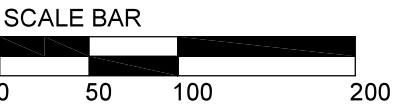
Project Title:
Planning application to vary approved restoration

Drawn:	SEP 20	Checked:	MM
Phase 3		Restoring to 35 metres AOD	

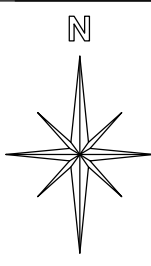
DWT/No:
DRCL/RCRAWP-06



Legend:
 Application Area



REVISIONS		
Date	Description	By
11/06/15	Issue for planning	MIC
11/11/15	Issue for planning	MIC
12/16/15	Issue for planning	MIC
15/01/16	Issue for planning	MIC
15/02/16	Issue for planning	MIC
15/04/16	Issue for planning	MIC
15/07/16	Issue for planning	MIC
15/08/16	Issue for planning	MIC
15/09/16	Issue for planning	MIC
15/10/16	Issue for planning	MIC
15/11/16	Issue for planning	MIC
16/01/17	Issue for planning	MIC
16/02/17	Issue for planning	MIC
16/04/17	Issue for planning	MIC
16/05/17	Issue for planning	MIC
16/06/17	Issue for planning	MIC
16/07/17	Issue for planning	MIC
16/08/17	Issue for planning	MIC
16/09/17	Issue for planning	MIC
16/10/17	Issue for planning	MIC
16/11/17	Issue for planning	MIC
16/12/17	Issue for planning	MIC
17/01/18	Issue for planning	MIC
17/02/18	Issue for planning	MIC
17/03/18	Issue for planning	MIC
17/04/18	Issue for planning	MIC
17/05/18	Issue for planning	MIC
17/06/18	Issue for planning	MIC
17/07/18	Issue for planning	MIC
17/08/18	Issue for planning	MIC
17/09/18	Issue for planning	MIC
17/10/18	Issue for planning	MIC
17/11/18	Issue for planning	MIC
17/12/18	Issue for planning	MIC
18/01/19	Issue for planning	MIC
18/02/19	Issue for planning	MIC
18/03/19	Issue for planning	MIC
18/04/19	Issue for planning	MIC
18/05/19	Issue for planning	MIC
18/06/19	Issue for planning	MIC
18/07/19	Issue for planning	MIC
18/08/19	Issue for planning	MIC
18/09/19	Issue for planning	MIC
18/10/19	Issue for planning	MIC
18/11/19	Issue for planning	MIC
18/12/19	Issue for planning	MIC
19/01/20	Issue for planning	MIC
19/02/20	Issue for planning	MIC
19/03/20	Issue for planning	MIC
19/04/20	Issue for planning	MIC
19/05/20	Issue for planning	MIC
19/06/20	Issue for planning	MIC
19/07/20	Issue for planning	MIC
19/08/20	Issue for planning	MIC
19/09/20	Issue for planning	MIC
19/10/20	Issue for planning	MIC
19/11/20	Issue for planning	MIC
19/12/20	Issue for planning	MIC
20/01/21	Issue for planning	MIC
20/02/21	Issue for planning	MIC
20/03/21	Issue for planning	MIC
20/04/21	Issue for planning	MIC
20/05/21	Issue for planning	MIC
20/06/21	Issue for planning	MIC
20/07/21	Issue for planning	MIC
20/08/21	Issue for planning	MIC
20/09/21	Issue for planning	MIC
20/10/21	Issue for planning	MIC
20/11/21	Issue for planning	MIC
20/12/21	Issue for planning	MIC
21/01/22	Issue for planning	MIC
21/02/22	Issue for planning	MIC
21/03/22	Issue for planning	MIC
21/04/22	Issue for planning	MIC
21/05/22	Issue for planning	MIC
21/06/22	Issue for planning	MIC
21/07/22	Issue for planning	MIC
21/08/22	Issue for planning	MIC
21/09/22	Issue for planning	MIC
21/10/22	Issue for planning	MIC
21/11/22	Issue for planning	MIC
21/12/22	Issue for planning	MIC



TERRESTRIA LIMITED
 TRL Night Consulting
 & Engine Movers
 Hampton & Aiden,
 Saltsford
 B82 0AZ
 Mob: 07712775625
 e-mail: mick@terrestria.co.uk

Client:
DUDMAN ROCK COMMON LIMITED

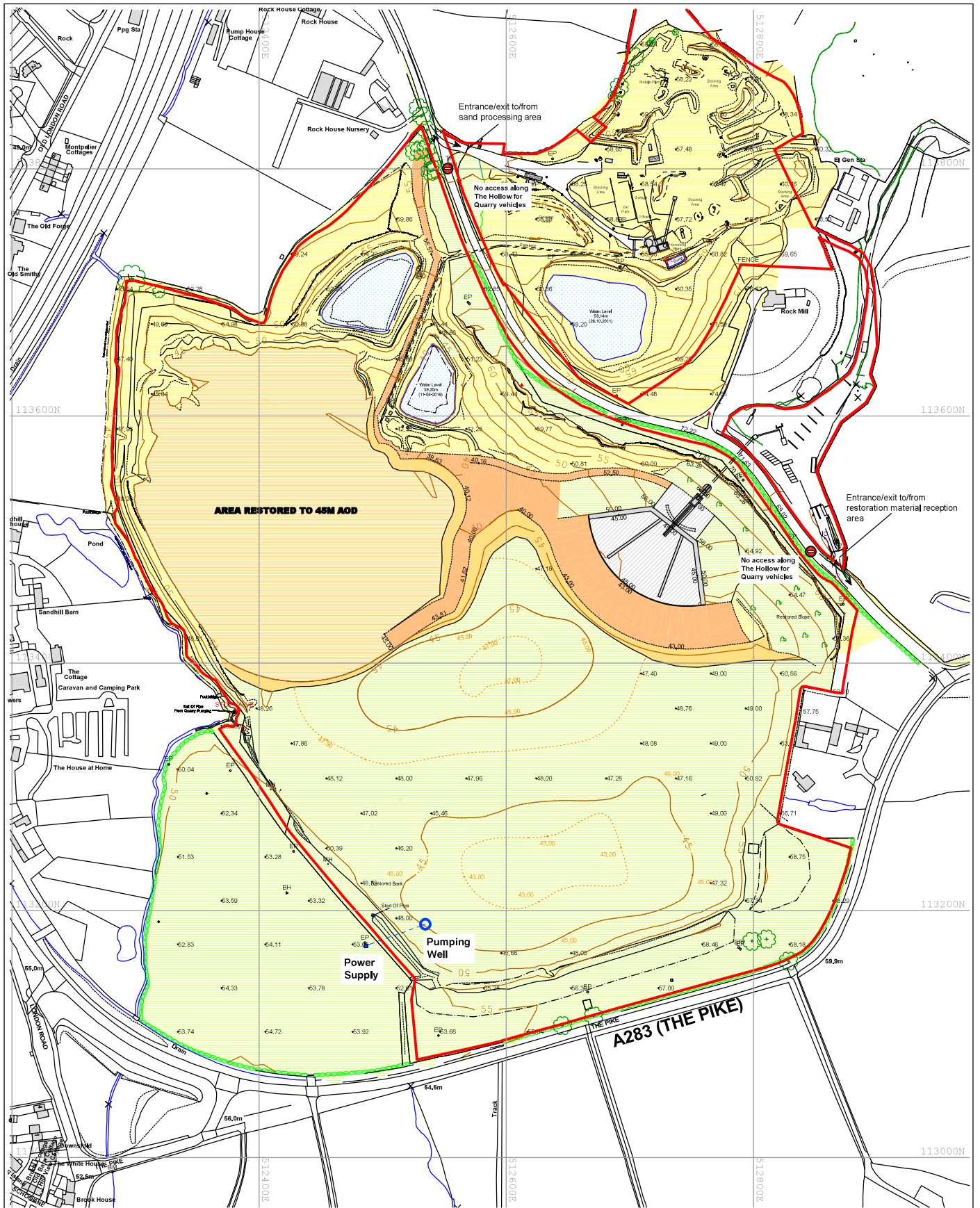
Job Title: Rock Common Quarry

Project Title: Planning application to vary approved restoration

Drawn	From	Checked
1:2000	SEP 20 (14)	SW MM

Draw Title:
**Phase 5
 Restoring to 35m AOD**

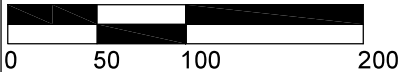
DWT/No:
DRCL/RCRAWP-08



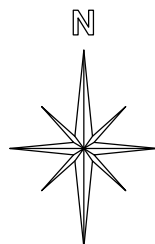
Legend:

Application Area

SCALE BAR



REVISIONS		
Date	Description	By
11/09/20	Initial Design	MM
11/09/20	Final Design	MM
11/09/20	As Built	MM



TERRESTRIA LIMITED

TERRESTRIA LIMITED
 T/A Night Consulting
 & Engine Movers
 Hampton Road,
 Salford
 B92 0AZ
 Mob: 0771277625
 e-mail: mick@terrestria.co.uk

Client
DUDMAN ROCK COMMON LIMITED

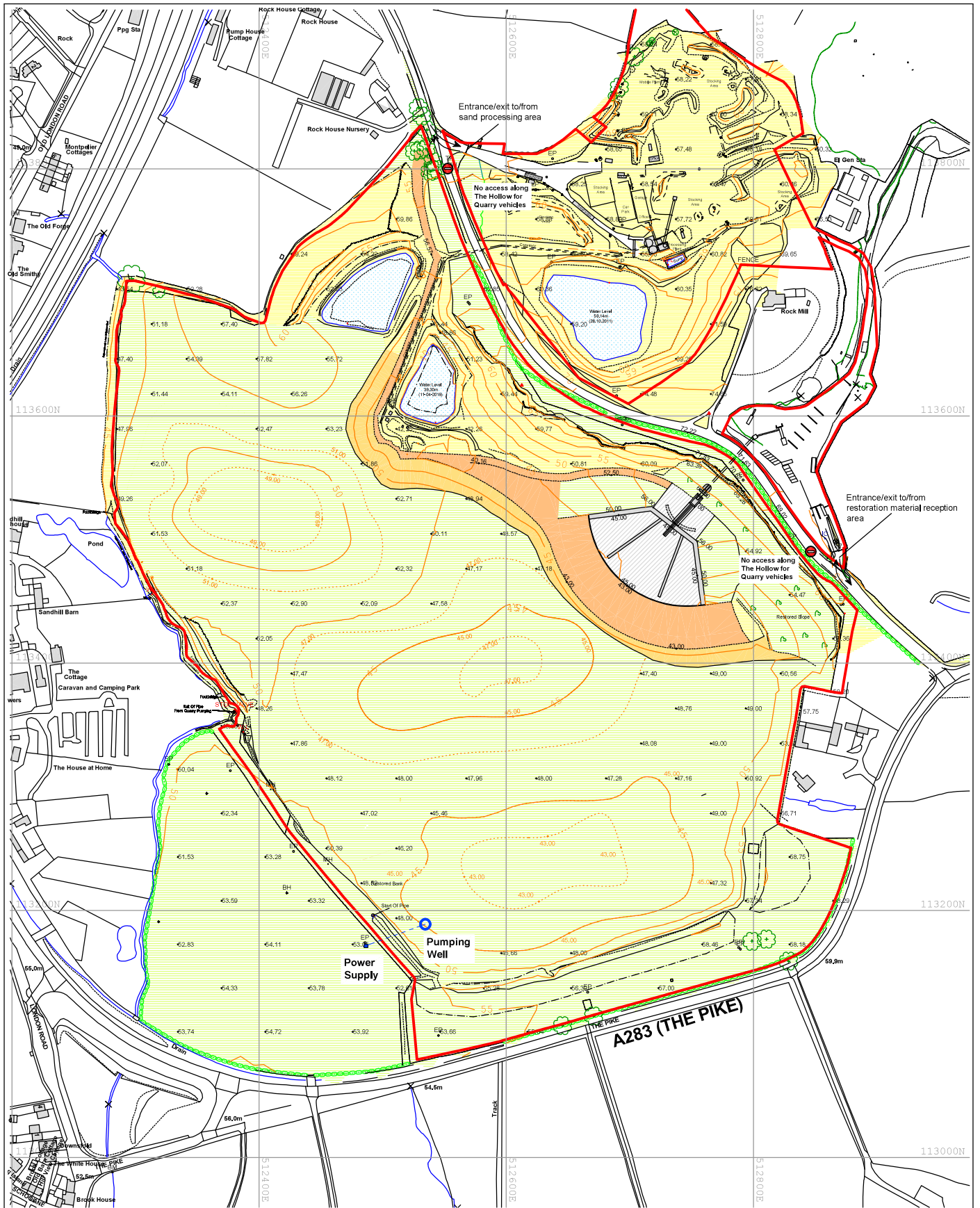
Job Title: Rock Common Quarry

Project Title:
Planning application to vary approved restoration

Drawn: SEP 20 (V4) SW
 Checked: MM

Drawn Title:
Phase 6 Restoring to 45m AOD

DWT/No:
DRCL/RCRAWP-09



Legend:

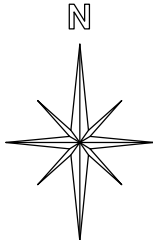
Application Area

SCALE BAR



REVISIONS

Date	Description	By
/		
/		
/		
/		
/		
/		
/		
/		
/		
/		



TERRESTRIA LIMITED

TERRESTRIA LIMITED
 T/A: Mott Consulting
 & Engine Movers,
 Hampton-on-Avon,
 Salford
 BR2 0AZ
 Mob: 0711277625
 e-mail: mick@terrestria.co.uk

Client
DUDMAN ROCK COMMON LIMITED

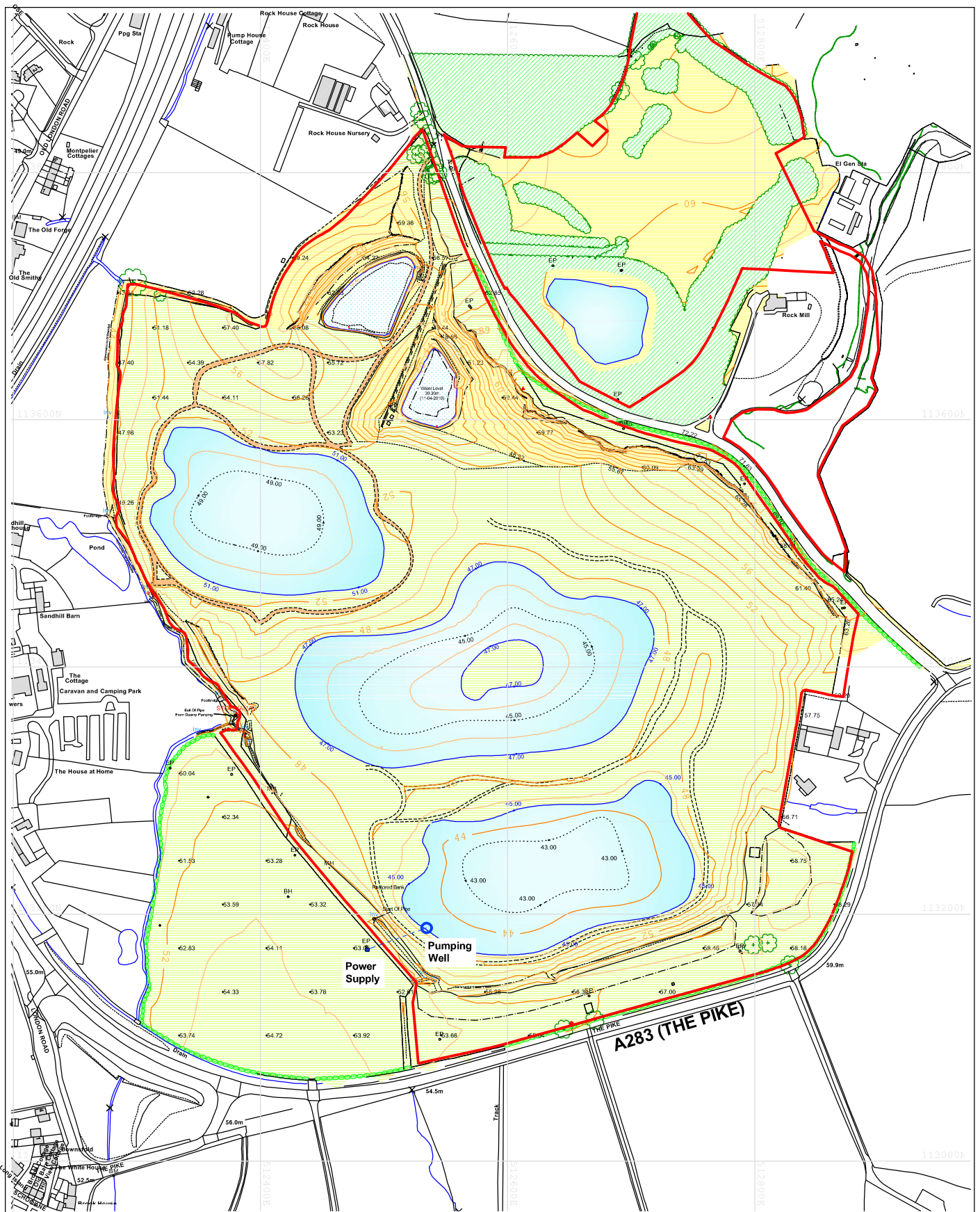
Job Title: Rock Common Quarry

Project Title:
Planning application to vary approved restoration

Date	From	To	Drawn	Checked
1:2000	SEP 20 (V4)	SW		MM

Disc Title:
Phase 7 Restoring to final landform

DWT/No:
DRCL/RCRAWP-10



Legend:

- Application Area
- Footpath for informal public access
- Private use access for maintenance and habitat management

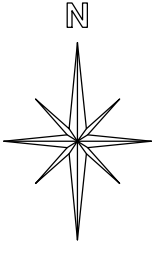
The final routing of footpaths both for informal public access and for private use may change subject to consultation during the application process

SCALE BAR



REVISIONS

Date	Description	By



TERRESTRIA LIMITED
 TERRA CONSULTING
 6 Engine Meads,
 Hampton-in-Arden,
 Solihull,
 B92 0AZ
 Mob - 07712779525
 e-mail - mick@terrestria.co.uk

Client
DUDMAN ROCK COMMON LIMITED

Job Title
Rock Common Quarry

Project Title
Planning application to vary approved restoration

Scale: 1:2000 Date: DEC 20 04 Drawn by: SW Checked: MM

Drawn Title
Final restoration

Drawn No:
DRCL/RCRAWP-11